



CROWNE PLAZA®

HOTELS & RESORTS

MARLOW

Crowne Plaza Marlow enjoys a tranquil setting, overlooking a small lake with the meandering Thames to the south of the hotel, yet just a few minutes from the M4 & M40 motorways, with easy access to the M25.

Guests will enjoy both the superb facilities and world-class service one would expect from such a prestigious name. The hotel features a full range of business and conference facilities, plus exceptional personal and leisure services and of course, a choice of superb dining experiences. All 168 guest rooms - complemented by a range of Suites and a Club Floor - are equipped to the very highest standards.



THE PLACE TO MEET

Crowne Plaza Marlow

LOCATION/TRANSPORTATION

- Just 1/2 mile east of Marlow town centre
- Easy access to the A404 (Marlow by-pass) from the M4 and M40
- Heathrow Airport is approximately 20 miles east of the hotel
- Central London is easily accessible by train from Marlow via Maidenhead to Paddington Station

ACCOMMODATION

- 3 floors with a total of 168 guest rooms
- A range of Suites and Club Rooms
- Dedicated smoking and non-smoking guest rooms
- Facilities for the physically disabled
- Air conditioning
- In-room computer connection and ISDN lines
- 24 hour room service
- Digital in-room entertainment
- Priority Club membership available

DINING & ENTERTAINMENT

- Agua Café & Bar serving hot and cold snacks and coffees, open from the croissant to the cocktail hour
- Glaze Restaurant with views of the lake and just the right ambience

SERVICES/FACILITIES

- Beautician
- Complimentary parking
- Limousine service available on request
- Car rental
- Concierge services

CONFERENCE FACILITIES

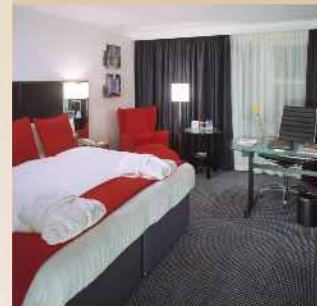
- One sub-divisible conference room for up to 450 delegates theatre style
- 6 additional meeting venues
- Executive Boardroom with plasma screen incorporating video conference, DVD system, CD, AV equipment and dedicated break-out area
- Excellent selection of conference catering from working to extended executive lunches
- Extensive grounds including a lake for team building and corporate entertainment

LEISURE AND SPA FACILITIES

- 9,500 sq ft leisure centre and Gymnasium
- Leisure pool with sauna and steam room
- Hot & cold tubs overlooking the lake
- Dance studio
- Beautician services
- Children's pool
- Solarium

WEDDINGS, FUNCTIONS & PRIVATE DINING

- Banqueting facility for up to 300
- A range of comfortable and discreet private dining rooms to cater for 4 to 140 guests
- Extensive lawns and grounds
- Our wedding and private function organisers offer an expert personal service



Crowne Plaza Marlow
Fieldhouse Lane, Marlow
Buckinghamshire
SL7 1GJ

Tel: +44 (0)870 444 8940

Fax: +44 (0)870 444 8950

Email: enquiries@crowneplazamarlow.co.uk

www.crowneplazamarlow.co.uk

meeting
Success
At Crowne Plaza